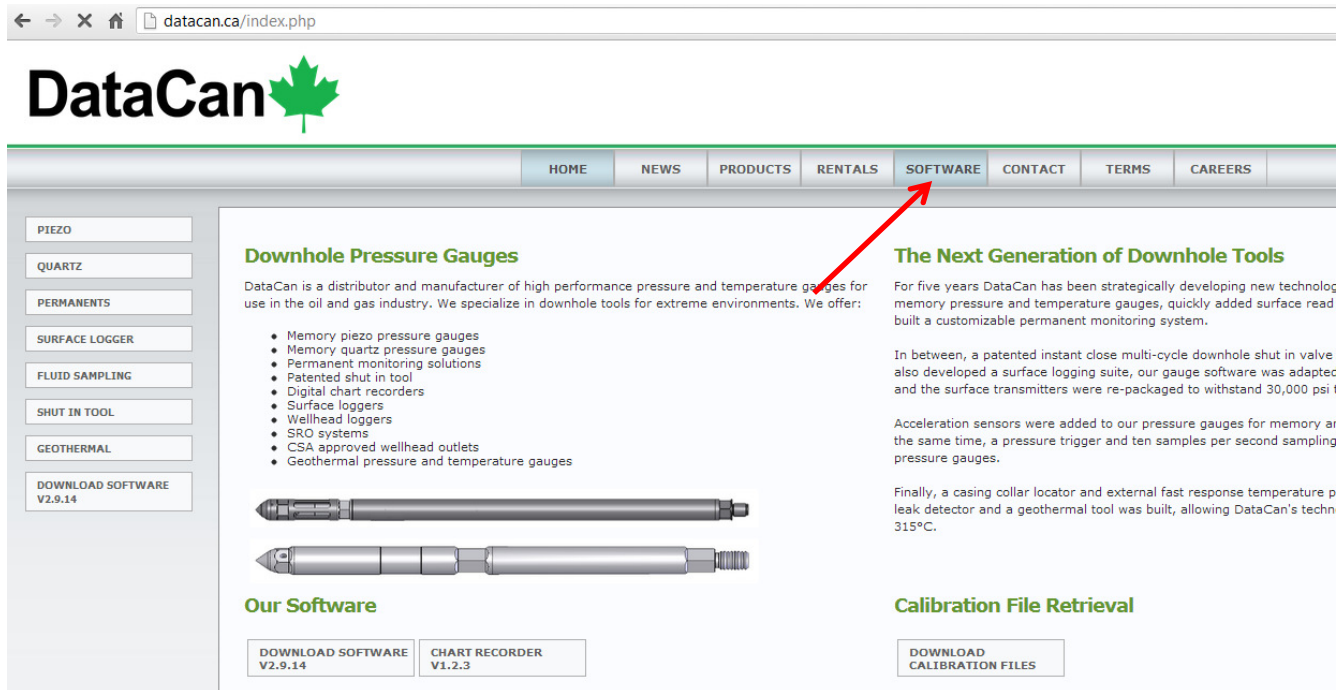


## Quick USB Driver Install Guide

The DataCan Download Cable requires a driver to be installed on each computer that you wish to communicate with a DataCan gauge. These drivers are located on the USB flash drive included with DataCan equipment and on DataCan's website.

### Located the Driver Install Utility

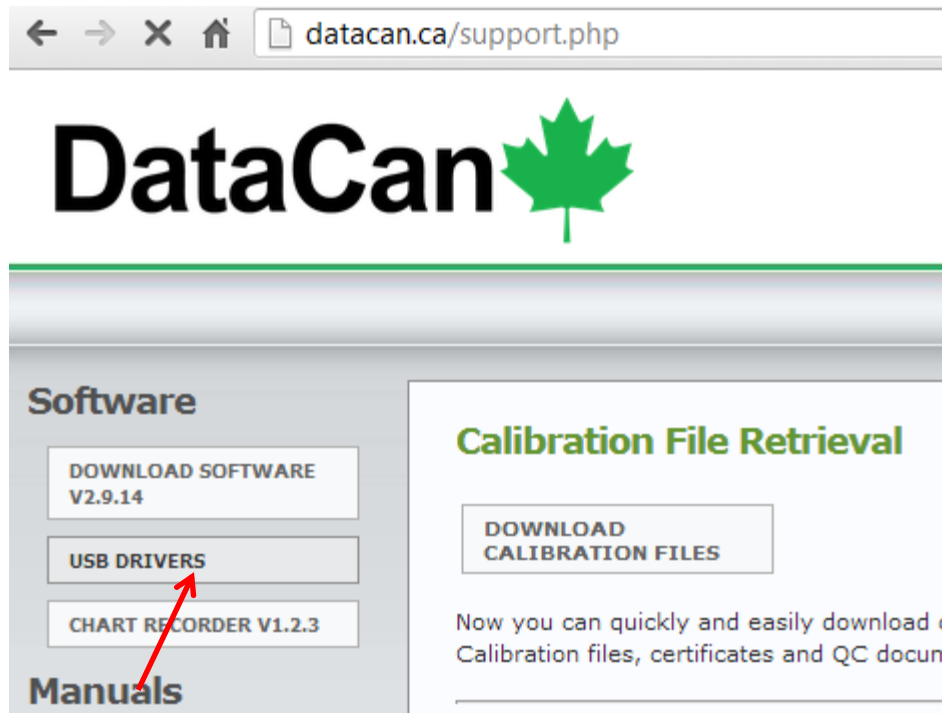
The drivers can be found in the USB flash drive in the "Drivers" folder. These same drivers can be downloaded from the DataCan website, [www.datacan.ca](http://www.datacan.ca) or [www.datacan.com](http://www.datacan.com). Navigate to the "Software" page from the links at the top of the page.



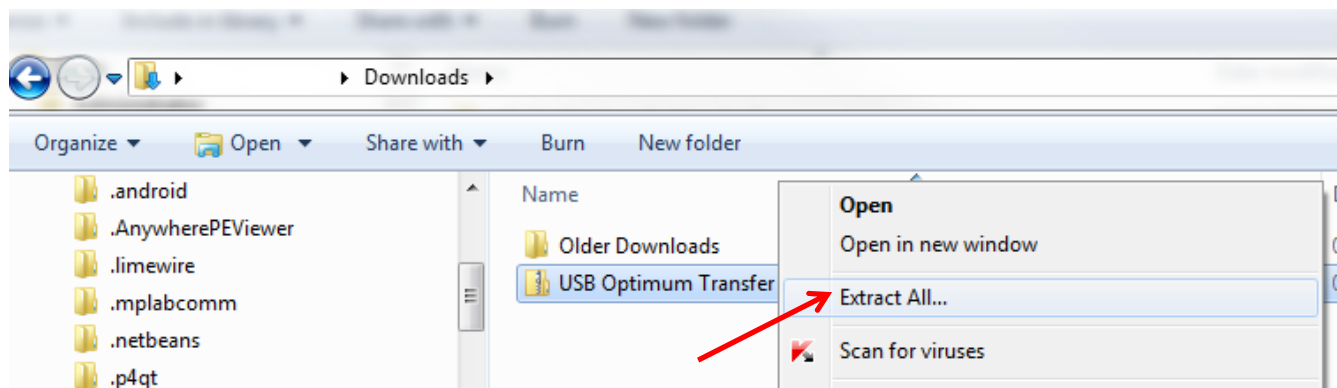
The screenshot shows the DataCan website interface. At the top, there is a navigation bar with links: HOME, NEWS, PRODUCTS, RENTALS, SOFTWARE, CONTACT, TERMS, and CAREERS. A red arrow points to the 'SOFTWARE' link. On the left side, there is a sidebar with a list of product categories: PIEZO, QUARTZ, PERMANENTS, SURFACE LOGGER, FLUID SAMPLING, SHUT IN TOOL, GEOTHERMAL, and a button for 'DOWNLOAD SOFTWARE V2.9.14'. The main content area is divided into two columns. The left column is titled 'Downhole Pressure Gauges' and contains a list of products: Memory piezo pressure gauges, Memory quartz pressure gauges, Permanent monitoring solutions, Patented shut in tool, Digital chart recorders, Surface loggers, Wellhead loggers, SRO systems, CSA approved wellhead outlets, and Geothermal pressure and temperature gauges. Below this list are two images of downhole pressure gauges. The right column is titled 'The Next Generation of Downhole Tools' and contains text about DataCan's strategic development of new technology for memory pressure and temperature gauges, a surface logging suite, and a pressure trigger and ten samples per second sampling pressure gauges. Below this text are two images of downhole tools. At the bottom of the main content area, there are three buttons: 'DOWNLOAD SOFTWARE V2.9.14', 'CHART RECORDER V1.2.3', and 'DOWNLOAD CALIBRATION FILES'.

In the left-hand pane, click the "USB DRIVERS" link to download the drivers or follow the link:

<http://www.datacan.ca/software/USB%20Optimum%20Transfer%20Driver.zip>



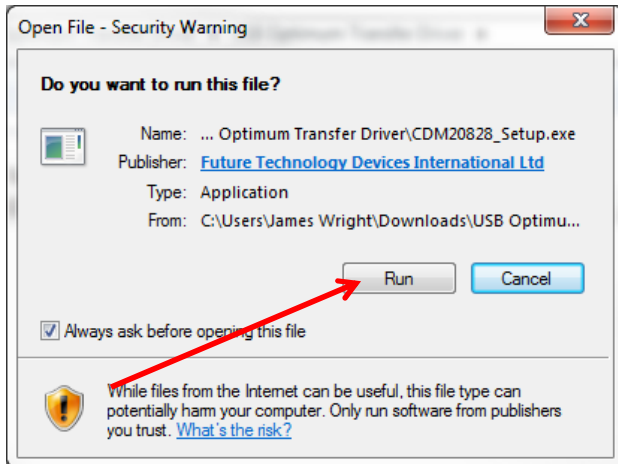
After downloading the driver from the website, locate the zip file in a file explorer window and unzip the downloaded "USB Optimum Transfer Driver.zip" file. This can be done by right-clicking on the file and selecting "Extract All..." from the menu that appears.



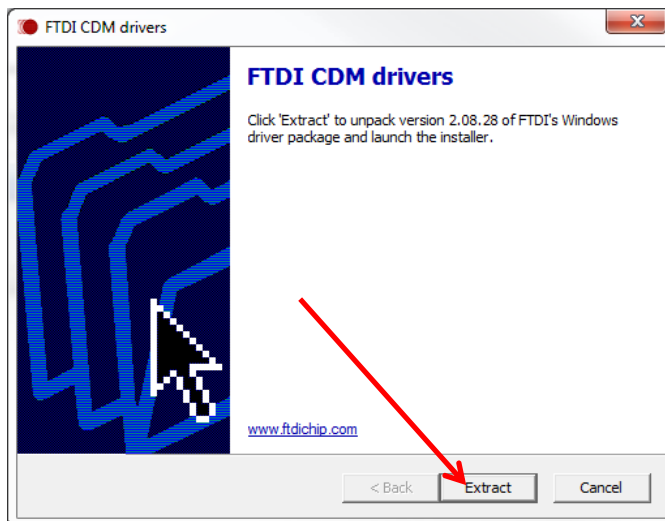
In the newly unzipped folder or in the "Drivers" folder on the USB flash drive, navigate until you find the "CDM20828\_Setup.exe" (the numbers will change as the driver is updated to newer versions).

## Running the Driver Installer

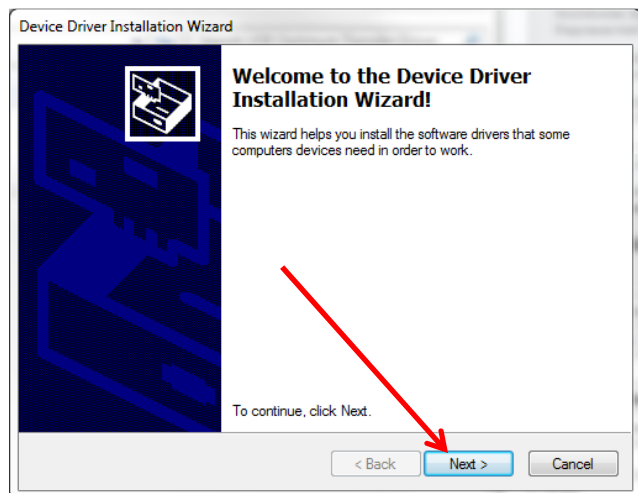
Unplug all DataCan Download Cables from the computer you are going to install the drivers on. Run the "CDM20828\_Setup.exe" file by double-clicking on it. You must have administrative privileges on your computer to run this file. If any security warnings appear, allow the software to run.



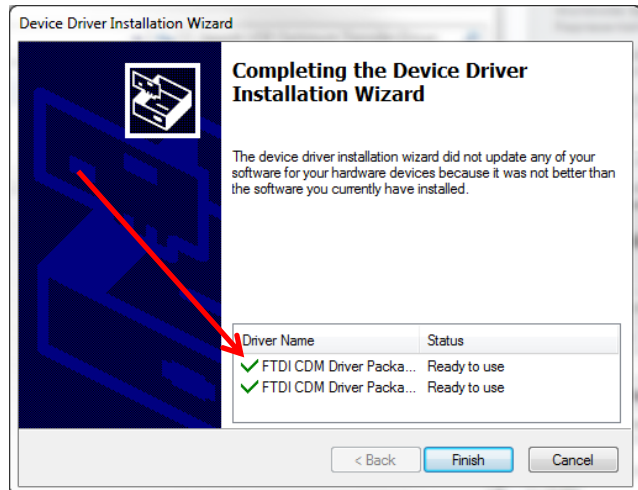
When the "FTDI CDM drivers" window appears, click the "Extract" button.



When the "Device Driver Installation Wizard" appears, click the "Next >" button.



The drivers will install. If there are green checkmarks in front of each driver installed in the window below, click "Finish". If there are any red "x" marks that appear, re-run the "CDM20828\_Setup.exe" program until you receive green check marks in front of each driver. In some cases, you will have to plug the DataCan Download Software in to the computer you just installed the drivers on and run the "CDM20828\_Setup.exe".



## Plugging in the Download Cable and Testing

Plug the DataCan Download Cable into your computer. If your computer finds the device and successfully installs the drivers, you are ready to install and use the DataCan Download Software. This process can take a couple of minutes.

If the download cable still does not work, keep it plugged into your computer and re-run the "CDM20828\_Setup.exe" program, then unplug the DataCan Download Cable and plug it back into your computer.

In your computer's "Device Manager" window, there should be a "USB Serial Port" entry under "Ports (COM & LPT)" and a "USB Serial Converter" entry under "Universal Serial Bus controllers" if the drivers installed correctly.

