

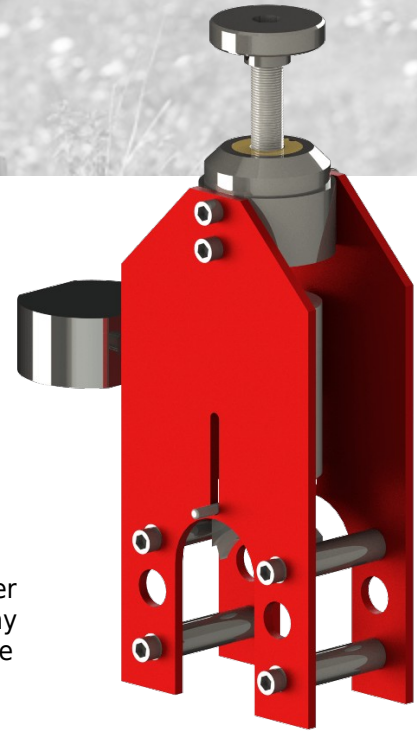
### Inline Tension Calibrator

#### Application

The Inline Tension Calibrator connects to a Lee Specialties Inline Tension Device to allow for quick and easy calibration. Frequent calibration keeps the tension measurement precise and accurate. Available for open hole and cased hole Inline Tension Devices.

#### Benefits

The Inline Tension Calibrator has a compact design, making it easily portable. Calibration can be done quickly, easily and safely as it does not require application of high tension or pulling force to wireline in order to calibrate the tension load sensor. This calibrator can be used with any readout system that is capable of interfacing to the Lee Specialties Inline Tension Device.



Item	Part Number	Weight	Dimensions
Calibration Device	AM401UU0001	11lb (5kg)	15.5" (394mm) x 4.4" (112mm) x 9.5" (241mm)
Transport Case	106712	11lb (5kg)	20" (508mm) x 7" (178mm) x 15.5" (394mm)

#### Description

One pound per square inch (psi) of pressure as shown on the gauge is equivalent to 1 pound of downward force on the load pin. Using this concept, the values below correspond to the line sizes described in the table below.

Values	Line Sizes						
	3/16"	7/32"	1/4"	9/32"	5/16"	3/8"	15/32"
Line Width (in)	0.1875	0.21875	0.25	0.28125	0.3125	0.375	0.46875
Full Scale Tension(lbf)	4312	3984	3702	6915	6487	5774	4959
Pressure on Calibrator	500	500	500	1000	1000	1000	1000

#### Details

Each calibrator is verified using a NIST traceable calibration standard. Certification available upon request.