

SERO

Spare Parts

Application

It is possible that some small parts may become lost, dropped, or damaged. For every installation, DataCan recommends bringing spare parts.

Features

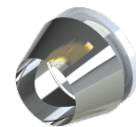
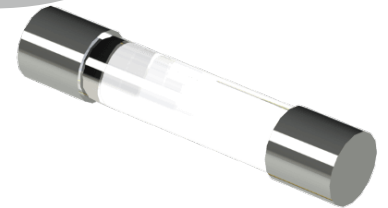
- Extra fuses for the surface box
- Extra connectors for the connection to the downhole gauge
- Extra o-rings, and ferrule sets for the cablehead

Permanent Spare Parts

| Description | Material | Part No. |
|---------------------|----------|----------|
| Fuse (1/2 A, 250 V) | Ceramic | 101816 |
| Connector | Brass | 10137 |

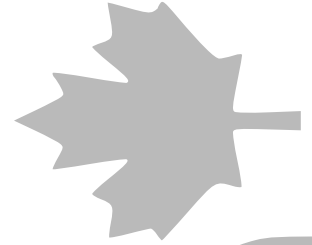
Ferrules

| Description | Material | Part No. |
|-------------|----------|----------|
| 1/4" | SS 316 | 100060 |
| | PTFE | 10089 |
| | Inconel | 101841 |
| 1/8" | SS 316 | 100555 |
| | Inconel | 101842 |



O-Rings, Back-Ups

| Type | Material | Part No. |
|--------------|--------------|----------|
| O-Ring 2-109 | HNBR | 101135 |
| | Viton 90 | 101815 |
| O-Ring 2-014 | HNBR | 10086 |
| | Viton 75 | 101609 |
| | Viton 90 | 100029 |
| | Chemraz 510 | 100796 |
| O-Ring 2-109 | Aflas 718 2B | 100795 |
| | PEEK | 100256 |
| | Viton 90 | 100801 |
| | Teflon | 100912 |



DataCan