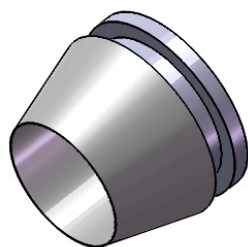
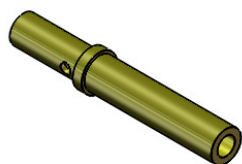
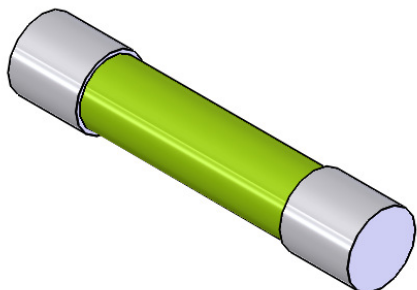


It is possible that some small parts may become lost, dropped, or damaged. For every installation, DataCan recommends bringing spare parts.

- ✦ Extra fuses for the surface box
- ✦ Extra connectors for the connection to the downhole gauge
- ✦ Extra o-rings, and ferrule sets for the cablehead



Permanent Spare Parts		
Description	Material	Part No.
Fuse (1/2A, 250V)	Ceramic	101816
Connector	Brass	10137

Ferrules		
Tubular Size	Material	Part No.
1/4"	SS 316	100060
	PTFE	10089
	Inconel	101841
1/8"	SS 316	100555
	Inconel	101842

O-Rings, Back-Ups		
Type	Material	Part No.
O-Ring 2-109	HNBR	101135
	Viton 90	101815
O-Ring 2-014	HNBR	10086
	Viton 75	101609
	Viton 90	100029
	Chemraz 510	100796
	Aflas 718 2B	100795
Back-Up 8-014	PEEK	100256
	Viton 90	100801
	Teflon	100912