

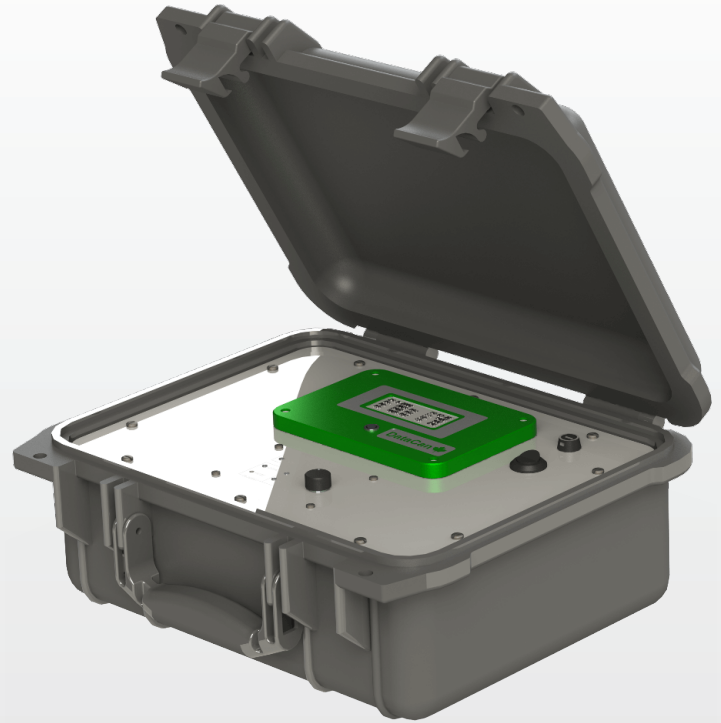
Pelican Case Surface Box

APPLICATION

DataCan's Pelican Case Surface Box is similar to our standard Single Gauge Surface Box, but comes in a portable and watertight pelican case. It has built in batteries making it completely self-contained.

FEATURES

- Digital Display
- 20 Million Sample Capacity
- Set-Up & Download Via USB
- Single Gauge Quartz or Piezo Input
- Two Surface Transmitters Input
- 4-20 Output
- ModBUS Output
- Watertight & Portable



BENEFITS

DataCan's Pelican Case Surface Box is durable, compact and convenient for testing and monitoring jobs in the field. It has low power requirements so it can run on the built in batteries for days and sometimes weeks. Set-up and data download is quick and easy via a USB connection.

Surface Data Collection

| Description | Part No. |
|---|----------|
| Pelican Case Surface Box w / Readout Display and Memory | 102992 |

Specifications

| | |
|-----------------|------------------------|
| Display | Pressure & Temperature |
| Memory Capacity | 20 Million Samples |
| Download Via | USB |
| Output | 4-20 mA, RS-485 Modbus |
| Power In | 12V |