

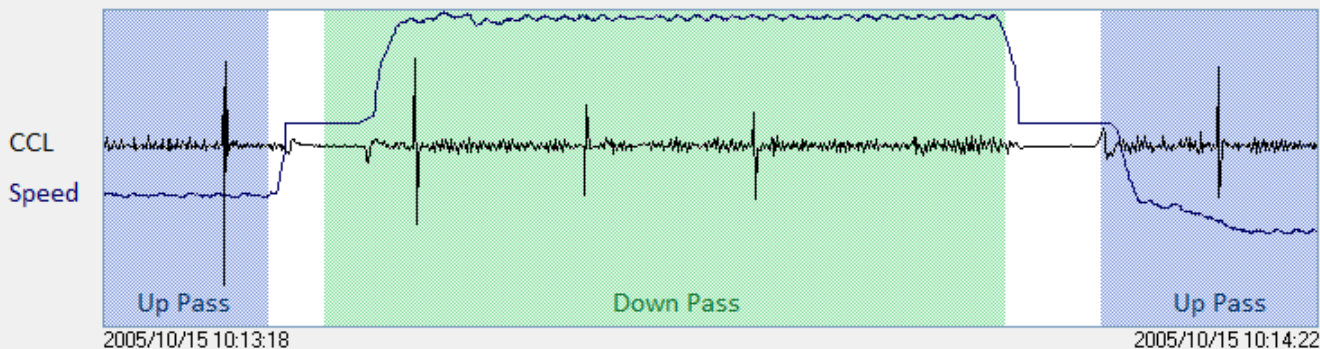
Description

The DataCan Memory Logging Software merges downhole data with depth to create individual passes. The depth passes are loaded into Premier Logger to compile a complete report including depth correction, overlays, mark up, and shading traces.



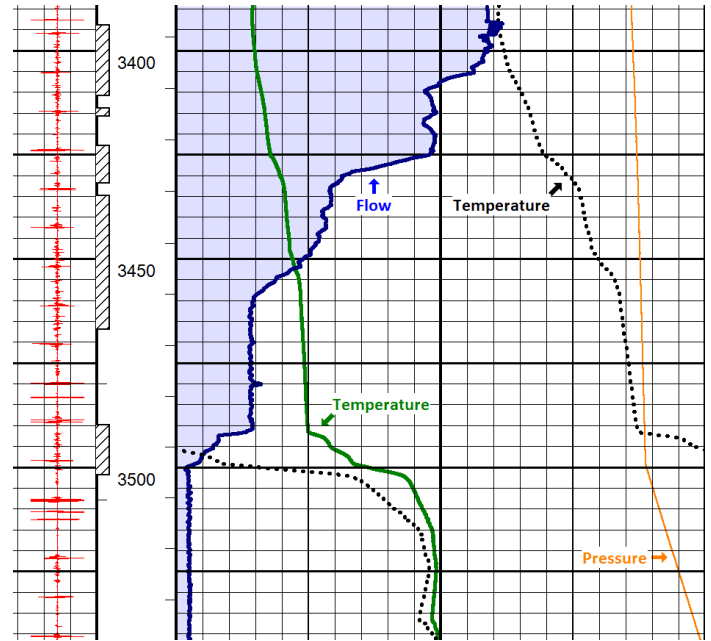
Log Passes Select Import Depth From... Serial Number 0405-084 Import Tool Data

Select	File	FlowRate(m ³ /D)	Direction	Speed(m/min)	Start Depth(m)	Stop Depth(m)	Start Time	Stop Time	Start Date
<input checked="" type="checkbox"/>	TEMP-PASS	0.000	Down	10.34	249.9	645.0	9:29:27	10:07:40	2005/10/15
<input checked="" type="checkbox"/>	DOWN30	0.000	Down	28.41	645.0	700.0	10:07:49	10:09:44	2005/10/15
<input checked="" type="checkbox"/>	UP30	0.000	Up	-28.97	700.0	650.1	10:09:48	10:11:31	2005/10/15
<input checked="" type="checkbox"/>	DOWN60	0.000	Down	55.17	650.1	700.0	10:11:35	10:12:29	2005/10/15
<input checked="" type="checkbox"/>	UP60	0.000	Up	-55.48	700.1	650.2	10:12:34	10:13:27	2005/10/15
<input checked="" type="checkbox"/>	DOWN90	0.000	Down	81.47	650.2	700.4	10:13:30	10:14:06	2005/10/15
<input checked="" type="checkbox"/>	UP90	0.000	Up	-79.51	700.4	649.4	10:14:11	10:14:49	2005/10/15
<input type="checkbox"/>		0.000	Up	-28.84	620.0	480.0	11:01:50	11:06:40	2005/10/15



Features

- Plot data versus measured depth or true vertical depth (TVD)
- Use reference passes and depth markers to assist with depth control
- Export/Import data to various file types including LAS, and TXT files
- Easily merge separate logging passes or LAS data into one complete log
- Ability to markup log passes
- Log Track presentation is customizable
- Simple and accurate real-time depth adjustment
- Put logs on depth by stretch correcting passes separately
- Generate PDF and TIF file through Log Composer
- Shade data traces from/to a particular position in the track
- Drag and drop for ease of use
- Use with other Premier Software features to create reports, including Cement Bond Log, Noise Temp Log, and Perforating Record



Accessories

- Standard Service Memory Adaptor Tool: AM005WA0008
- H2S Service Memory Adaptor Tool: AM005WB0008
- 10,000 psi Mini Production Logging Tool : 105059
- 15,000 psi Mini Production Logging Tool: 105060
- LineWise System: AE304UU0002
- Portable Memory Recorder: AE308UU0002

