



1 X "AAA"  
4 Pin Lemo



1 X "AA"  
4 Pin Lemo



1 X "C"  
4 Pin Lemo



1 X "C"  
Threaded Locking  
4 Pin Lemo

AAA - 4 Pin Lemo Connector					
Size	Max Temp	Volts	Ahr	Part No.	Products
AAA	150°C	3.6	0.7	104284	1/2" Piezo
	165°C			104287	

AA - 4 Pin Lemo Connector					
Size	Max Temp	Volts	Ahr	Part No.	Products
AA	150°C	3.6	1.6	100408	3/4" Piezo (Standard, Welded, Accelerometer) 3/4" Quartz DXB 1" Quartz DXB 1" Side Pocket Geothermal 3/4" Inclinometer 3/4" Vibration
	165°C		1.6	100804	
	180°C		1.4	100805	
	200°C		1.2	100409	
2 X AA	150°C	3.6	3.2	100411	
	165°C		3.2	100806	
	180°C		2.8	100807	
	200°C		2.4	100412	

AA - Threaded Locking 4 Pin Lemo Connector					
Size	Max Temp	Volts	Ahr	Part No.	Products
2 X AA	150°C	3.6	3.2	105262	1-1/4" Burst
	165°C		3.2	105263	
	180°C		2.8	105264	

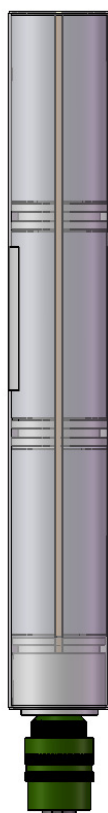
C - 4 Pin Lemo Connector					
Size	Max Temp	Volts	Ahr	Part No.	Products
C	150°C	3.6	6.5	100671	1-1/4" Piezo (Standard, RTD, Welded III)
	165°C		5.5	100499	
	180°C		5.5	100500	
1 X CC	150°C	3.6	15.0	101010	
	165°C		14.0	100989	
	180°C		10.5	100814	

C - Threaded Locking 4 Pin Lemo Connector						
Size	Max Temp	Volts	Ahr	Part No.	Products	
C	150°C	3.6	6.5	101268	1-3/8" Piezo (Welded) 1-1/4" Quartz VQ Production Logging Tools (Basic, Mini)	
	165°C		5.5	101269		
	180°C		5.5	101270		
	200°C		5.0	101271		
1 X CC	150°C	3.6	15.0	102362		
	165°C		14.0	102240		
	180°C		10.5	105234		
	200°C		9.0	105235		
2 X CC	150°C	3.6	30.0	102780	1-1/4" Quartz DXB 2	
	165°C		28.0	102927		
	180°C		21.0	102928		
	200°C		18.0	102929		
3 X CC	150°C	3.6	45.0	102381		
	165°C		42.0	102937		
	180°C		31.5	102938		
	200°C		27.0	102939		



1 X "Sub CC"  
Threaded Locking  
4 Pin Lemo

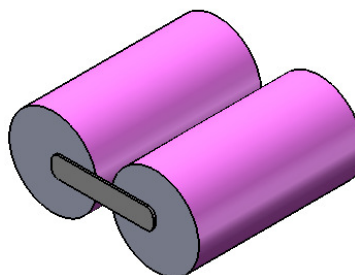
Sub CC - Threaded Locking 4 Pin Lemo Connector					
Size	Max Temp	Volts	Ahr	Part No.	
Sub CC	150°C	3.6	10.0	100808	1-1/4" Piezo (Welded II) 1-1/4" Quartz DXB
	165°C		9.0	100226	
	180°C		7.0	100885	
	200°C		6.5	100227	
2 X Sub CC	150°C		20.0	101660	
	165°C		18.0	101000	
	180°C		14.0	102023	
	200°C		13.0	101001	



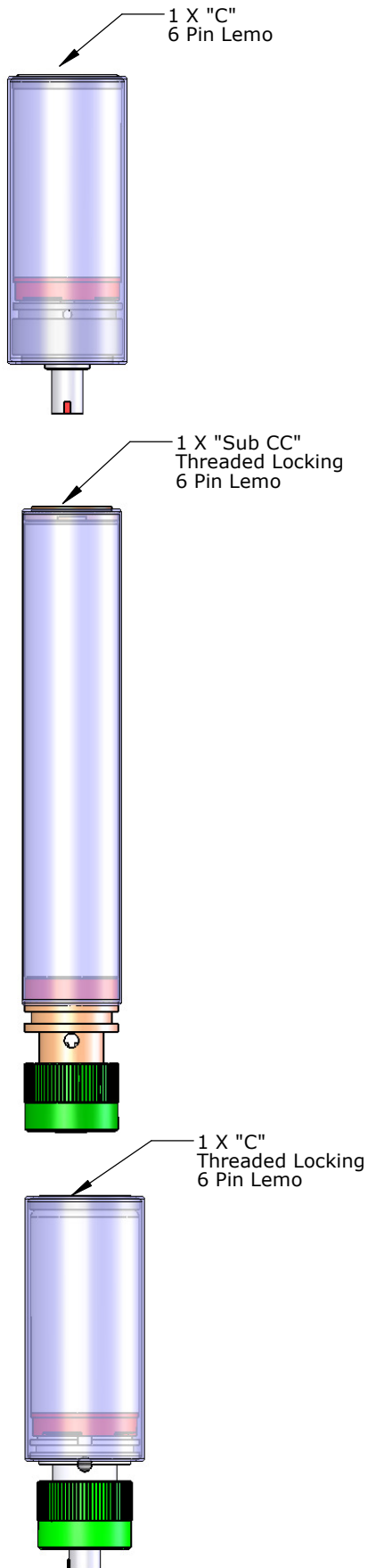
3 X "C"  
4 Pin Amphenol

C /D- 4 Pin Amphenol Connector					
Size	Max Temp	Volts	Ahr	Part No.	Products
2 X C	150°C	7.3	6.0	102376	Digital Clock
	165°C		5.5	103543	
3 X C	150°C	11.0	12.0	100639	2-3/8" Quick Shut In Tool 3-1/2" Quick Shut In Tool 4-1/2" Quick Shut In Tool
	165°C		11.0	100203	
3 X D	150°C		10.0	103586	
	165°C		10.0	103587	
	180°C		6.5	103588	

D - Logger Battery Pack					
Size	Max Temp	Volts	Ahr	Part No.	
2 X D	85°C	3.6	34.0	101472	Wellhead Logger Surface Logger



2 X "D"  
Logger Battery Pack



DataCan's battery packs are now available with capacity measurement circuits.

These new "smart battery packs" record the current draw from each lithium battery cell and give users an accurate measurement of the battery packs remaining life.

The recorded battery capacity can be read by DataCan's easy to use gauge software.

C - 6 Pin Lemo Connector					
Size	Max Temp	Volts	Ahr	Part No.	Products
C	150°C	3.6	6.0	102056	1-1/4" Piezo (Standard, RTD, Welded III)
2 X C	150°C		12.0	102060	

C - Threaded Locking 6 Pin Lemo Connector					
Size	Max Temp	Volts	Ahr	Part No.	Products
C	150°C	3.6	6.0	102069	1-3/8" Piezo (Welded)
2 X C	150°C		12.0	102073	

Sub CC - Threaded Locking 6 Pin Lemo Connector					
Size	Max Temp	Volts	Ahr	Part No.	Products
Sub CC	150°C	3.6	10.0	102063	1-1/4" Piezo (Welded II) 1-1/4" Quartz DXB
2 X Sub CC	150°C		20.0	102066	



#### Features

- ★ Simplicity
- ★ Check Battery Voltage
- ★ Depassivate Lithium Cells

Battery Tester	
Connector	Part No.
4 Pin Lemo	100876
4 Pin Military	100887
Lee Production Logging	106326